



Helena Ramontsoe
0824916309
helenar@delucia.co.za

Contact Kempton Park

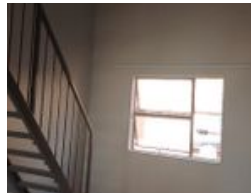
011 975 5911

Entrance 9,
Gleneagles Office Park,
Kooersboom Ave,
Glen Erasmia x22,
Kempton Park,
1619



SOLE MANDATE

Web Ref RL3476



R3,500 pm

Lease Period 12 months
Annual Escalation -

Availability Immediately

Deposit R3,500

 1  1

Lovely One bedroom unit available in Kempton Park

Stunning One bedroom unit available in Graceville court Kempton park.

- Semi-open plan that opens to onto lounge.
- One bedroom with build -in cupboards.
- One covered parking.
- The complex has 24-hour security and easy access to the highways and OR Tambo International Airport.

The deposits are as follows

- Rental Monthly R3 500.00
- Rental deposits R3 500.00
- Service deposit R1 500.00
- Admin Fee R850.00
- Inspection fee R1 300.00
- Sundries monthly R65

Features

Interior

| | |
|--------------|----|
| Bedrooms | 1 |
| Bathrooms | 1 |
| Kitchens | 1 |
| Recep. Rooms | 1 |
| Furnished | No |

Exterior

| | |
|---------------------|-------|
| Carports / Parkings | 1 |
| Security | Yes |
| Pool | No |
| Views | False |

