



Tiffane Van Der Westhuizen
0824916309
tiffanevdw@delucia.co.za

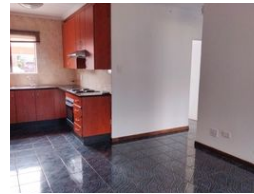
Contact Kempton Park

011 975 5911

Entrance 9,
Gleneagles Office Park,
Koorsboom Ave,
Glen Erasmia x22,
Kempton Park,
1619



Web Ref RL3606



R6,500 pm

Lease Period 12 months Availability Immediately Deposit -
Annual Escalation -

 2  1

Ground Floor Unit In A Popular Complex Close to Local Amenities and Major Roads

Open plan lounge with covered patio, 2 bedrooms and full bathroom.

Carport, communal pool, braai facilities and kids play area.

Kindly note that the rental excludes prepaid electricity, water, sewerage & refuse.

Only 4 occupants including children, are allowed.

Unfortunately, the unit is not pet-friendly.

A minimum salary of R19 500 per month net is required to apply for the property.

All applications are subject to a credit check, confirmation of employment/income, and deposit payment.

Viewing strictly by appointment!

Deposits are as follows:
Rental Deposit: R6 500

Features

Interior

| | |
|--------------|----|
| Bedrooms | 2 |
| Bathrooms | 1 |
| Kitchens | 1 |
| Recep. Rooms | 1 |
| Furnished | No |

Exterior

| | |
|---------------------|-------|
| Carports / Parkings | 1 |
| Security | Yes |
| Pool | Yes |
| Views | False |

