

Joey Alston
0832636832
joeya@delucia.co.za

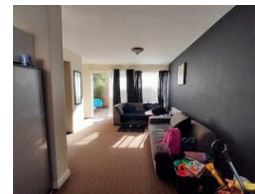
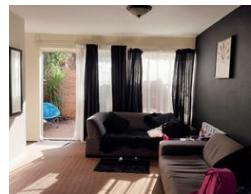
Contact Kempton Park

011 975 5911

Entrance 9,
Gleneagles Office Park,
Koorsoom Ave,
Glen Erasmia x22,
Kempton Park,
1619



Web Ref RL3477



R795,000

Monthly Bond Repayment R8,205.90
Calculated over 20 years at 11% with no deposit.

Transfer Costs R25,898.00 **Bond Costs** R19,565.00

These calculations are only a guide. Please ask your conveyancer for exact calculations.

 2  1

Townhouse for sale in Van Riebeeck Park

This modern two-bedroom duplex townhouse offers contemporary living in a secure, pet-friendly complex. Boasting a private garden, it provides a perfect outdoor space for relaxation and entertaining. The residence features spacious, well-lit interiors with an open-plan living area, a sleek kitchen, and two comfortable bedrooms. The complex ensures peace of mind with 24-hour security guards and controlled access. Ideal for families or professionals seeking a blend of comfort, style, and safety, this townhouse promises a serene and convenient lifestyle with amenities close at hand.

Features

Pets Allowed	Yes			
Interior		Exterior		Sizes
Bedrooms	2	Carports / Parkings	1	Floor Size
Bathrooms	1	Security	Yes	63m ²
Kitchens	1	Pool	No	
Recep. Rooms	2	Views	False	
Furnished	No			

