

**Charlotte Scheepers**  
0692172126  
charlottes@delucia.co.za

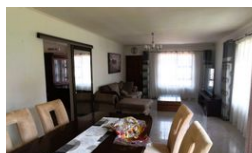
Contact Kempton Park

011 975 5911

Entrance 9,  
Gleneagles Office Park,  
Koorsoom Ave,  
Glen Erasmia x22,  
Kempton Park,  
1619



Web Ref RL3601



R1,650,000

**Monthly Bond Repayment** R17,031.11  
Calculated over 20 years at 11% with no deposit.

**Transfer Costs** R52,453.00    **Bond Costs** R30,875.00

These calculations are only a guide. Please ask your conveyancer for exact calculations.

 3     2     2

### House for sale in Van Riebeeck Park

This well-maintained 3-bedroom family home offers a perfect blend of comfort and practicality. Featuring neat finishes throughout, it boasts a spacious lounge and dining area, creating a warm and inviting atmosphere for family living and entertaining.

The large kitchen is a standout feature, offering ample counter space, plenty of storage, and room to accommodate all your culinary needs. The three well-sized bedrooms provide a peaceful retreat, with the main bedroom featuring an en-suite bathroom for added convenience. A second full bathroom serves the rest of the home.

Step outside to a generous garden, perfect for children to play, pets to roam, or for hosting outdoor gatherings. The double garage ensures secure parking and extra storage space.

This home is ideal for families seeking space, comfort, and convenience in a...

### Features

**Pets Allowed** Yes

#### Interior

Bedrooms 3  
Bathrooms 2  
Kitchens 1  
Recep. Rooms 2  
Studies 1  
Furnished No

#### Exterior

Garages 2  
Carports / Parkings 2  
Security Yes  
Dom. Accom. 1  
Pool No  
Views False

