

Charlotte Scheepers
0692172126
charlottes@delucia.co.za

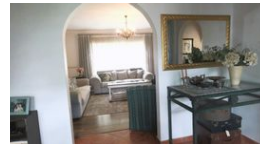
Contact Kempton Park

011 975 5911

Entrance 9,
Gleneagles Office Park,
Koorsboom Ave,
Glen Erasmia x22,
Kempton Park,
1619



Web Ref RL3600



R2,595,000

4 Bedrooms 2 Bathrooms 3 Garages

Monthly Bond Repayment R26,785.29
Calculated over 20 years at 11% with no deposit.

Transfer Costs R123,320.00 **Bond Costs** R38,415.00
These calculations are only a guide. Please ask your conveyancer for exact calculations.

Monthly Rates R2,000

House for sale in Van Riebeeck Park

Step into this stunning and meticulously maintained 4-bedroom family home, where modern elegance meets practical comfort. Boasting a spacious open-plan layout, this home features sleek, contemporary finishes throughout. The heart of the home is a stylish, well-appointed kitchen with high-end appliances, ample storage, and a center island—perfect for entertaining and family gatherings.

The generously sized bedrooms offer built-in cupboards, with the master suite providing a luxurious en-suite retreat. The expansive living and dining areas flow seamlessly onto a beautifully landscaped garden, ideal for outdoor relaxation and entertaining.

Adding incredible value is a full granny flat, complete with its own entrance, living space, kitchen, and bathroom—perfect for extended family or rental income. With three secure garages,...

Features

Pets Allowed		Yes			
Interior		Exterior		Sizes	
Bedrooms	4	Garages	3	Land Size	1,583m ²
Bathrooms	2	Carports / Parkings	1		
Kitchens	1	Security	Yes		
Recep. Rooms	2	Pool	No		
Furnished	No	Views	False		

