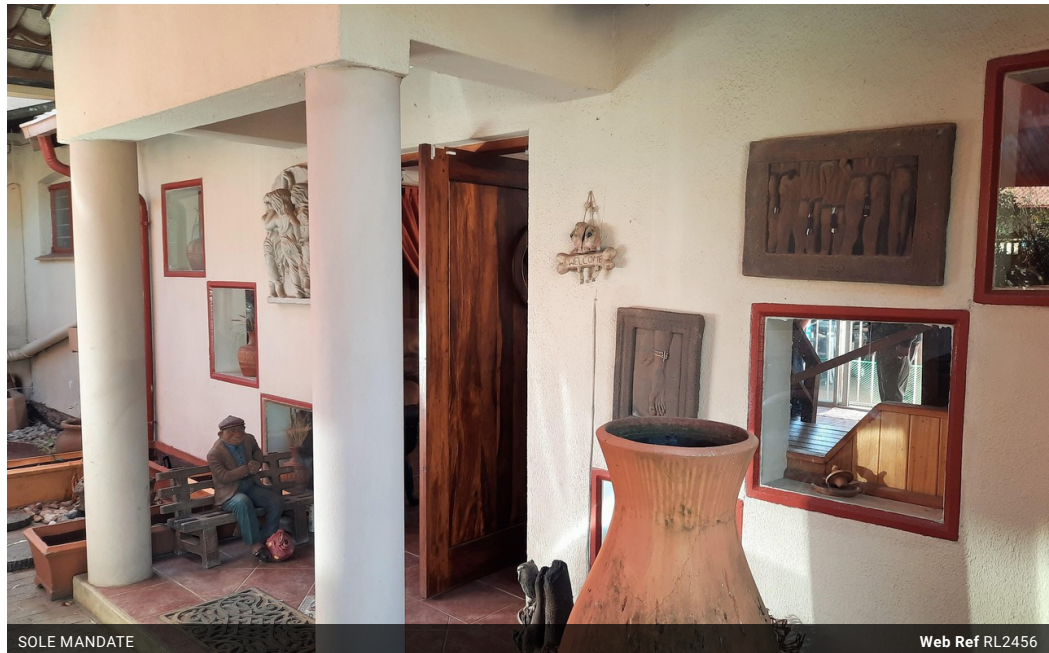


Joey Alston
0832636832
joeya@delucia.co.za

Contact Kempton Park

011 975 5911

Entrance 9,
Gleneagles Office Park,
Kooersboom Ave,
Glen Erasmia x22,
Kempton Park,
1619



SOLE MANDATE

Web Ref RL2456



R2,100,000

3 Bedrooms, 2 Bathrooms, 2 Carports

Monthly Bond Repayment R21,675.96
Calculated over 20 years at 11% with no deposit.

Transfer Costs R83,947.00 Bond Costs R34,625.00

These calculations are only a guide. Please ask your conveyancer for exact calculations.

Monthly Levy R630 Monthly Rates R1,556

House for sale in Van Riebeeck Park

LARGE FAMILY LIVING WITH 2 FULL GRANNY FLATS. This enormous home offers 3 bedrooms, a sparkling pool with entertainment area, plus 2 granny flats, one with 1 bedrooms, and the other with 2 bedrooms. Situated in a boomed-off area. Make the call today to VIEW EXCLUSIVELY

Features

Interior

Bedrooms	3
Bathrooms	2
Kitchens	1
Recep. Rooms	3
Furnished	No

Exterior

Garages	2
Carports / Parkings	4
Security	Yes
Pool	Yes

Sizes

Floor Size	475m ²
Land Size	1,143m ²

