



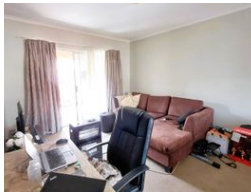
Tinus Coetzer
0845718936
tinusc@delucia.co.za

Contact Kempton Park

011 975 5911

Entrance 9,
Gleneagles Office Park,
Koorsboom Ave,
Glen Erasmia x22,
Kempton Park,
1619

2 Bedroom Townhouse For Sale in Terenure



R780,000

2 2

Monthly Bond Repayment R8,051.07
Calculated over 20 years at 11% with no deposit.
Transfer Costs R25,898.00 **Bond Costs** R19,565.00
These calculations are only a guide. Please ask your conveyancer for exact calculations.
Monthly Levy R1,156 **Monthly Rates** R455

Townhouse for sale in Terenure

This stylish 2-bedroom, 2-bathroom townhouse offers contemporary living with sleek, modern finishes throughout. The open-plan design seamlessly connects the kitchen, dining, and living areas, creating a bright and spacious flow ideal for relaxed living and entertaining. Step out onto the expansive balcony, complete with a built-in braai, perfect for hosting guests or enjoying sunset views. Both bedrooms are generously sized with ample built-in storage, while the bathrooms are elegantly designed with quality fixtures. Situated in a secure and well-maintained complex, this modern gem offers convenience, comfort, and a lock-up-and-go lifestyle close to shopping centres, schools, and major transport routes.

Features

Interior		Exterior		Sizes	
Bedrooms	2	Carports / Parkings	1	Floor Size	78m²
Bathrooms	2	Security	Yes		
Kitchens	1	Pool	No		
Recep. Rooms	1	Views	False		
Furnished	No				

