

**Charlotte Scheepers**  
0692172126  
charlottes@delucia.co.za

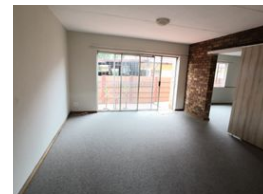
Contact Kempton Park

011 975 5911

Entrance 9,  
Gleneagles Office Park,  
Koorsboom Ave,  
Glen Erasmia x22,  
Kempton Park,  
1619



Web Ref RL3552



**R995,000**

**Monthly Bond Repayment** R10,270.27  
Calculated over 20 years at 11% with no deposit.

**Transfer Costs** R30,412.00    **Bond Costs** R23,335.00

These calculations are only a guide. Please ask your conveyancer for exact calculations.

**Monthly Levy** R1,319    **Monthly Rates** R931



### Townhouse for sale in Terenure

This charming 3-bedroom, 2-bathroom simplex townhouse offers secure and comfortable living in a well-maintained complex. Perfectly designed for convenience and ease, this home features an open-plan layout that seamlessly connects the living areas, creating a warm and inviting atmosphere. The bedrooms are well-sized with ample natural light, and the master bedroom includes an en-suite bathroom. With the added benefit of a lockup garage and 24-hour security, you'll enjoy peace of mind in a safe community. Ideal for families or professionals, this townhouse is close to essential amenities, schools, and shopping centers, offering both comfort and convenience.

### Features

<b>Pets Allowed</b>	Yes		
<b>Interior</b>		<b>Exterior</b>	<b>Sizes</b>
Bedrooms	3	Garages	1
Bathrooms	1	Carports / Parkings	1
Kitchens	1	Security	Yes
Recep. Rooms	2	Pool	No
Furnished	No	Views	False
		Floor Size	118m <sup>2</sup>

