



Charlotte Scheepers
0692172126
charlottes@delucia.co.za

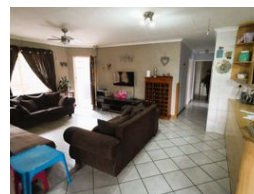
Contact Kempton Park

011 975 5911

Entrance 9,
Gleneagles Office Park,
Koorsboom Ave,
Glen Erasmia x22,
Kempton Park,
1619



Web Ref RL3551



R1,300,000

3 Bedrooms, 2 Bathrooms, 1 Garage

Monthly Bond Repayment R13,418.45
Calculated over 20 years at 11% with no deposit.

Transfer Costs R37,617.00 Bond Costs R27,105.00

These calculations are only a guide. Please ask your conveyancer for exact calculations.

Monthly Levy R931 Monthly Rates R790

Townhouse for sale in Terenure

This charming 3-bedroom, 2-bathroom simplex townhouse offers secure and comfortable living in a well-maintained complex. Perfectly designed for convenience and ease, this home features an open-plan layout that seamlessly connects the living areas, creating a warm and inviting atmosphere. The bedrooms are well-sized with ample natural light, and the master bedroom includes an en-suite bathroom. With the added benefit of a lockup garage and 24-hour security, you'll enjoy peace of mind in a safe community. Ideal for families or professionals, this townhouse is close to essential amenities, schools, and shopping centers, offering both comfort and convenience.

Features

Pets Allowed	Yes		
Interior		Exterior	Sizes
Bedrooms	3	Garages	Floor Size
Bathrooms	2	Carports / Parkings	128m ²
Kitchens	1	Security	
Recep. Rooms	2	Pool	
Furnished	No	Views	

