



**Tsakani Khoza**  
0747170093  
tsakanik@delucia.co.za

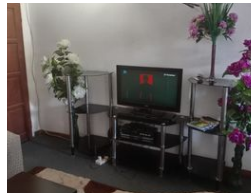
Contact Kempton Park

011 975 5911

Entrance 9,  
Gleneagles Office Park,  
Koorsboom Ave,  
Glen Erasmia x22,  
Kempton Park,  
1619



Web Ref RL3538



R685,000

2 Bedrooms 1 Bathroom

**Monthly Bond Repayment** R7,070.49  
Calculated over 20 years at 11% with no deposit.

**Transfer Costs** R23,730.00    **Bond Costs** R17,680.00

These calculations are only a guide. Please ask your conveyancer for exact calculations.

**Monthly Levy** R1,800    **Monthly Rates** R450

Townhouse for sale in Terenure

This modern 2-bedroom townhouse offers a spacious open-plan living area, seamlessly integrating the living room and kitchen to create a warm, inviting atmosphere. The contemporary kitchen is well-appointed with ample storage and counter space, perfect for cooking and entertaining. Both bedrooms are generously sized, ideal for relaxation or work-from-home needs. Situated in a secure, well-maintained complex, residents enjoy peace of mind with 24-hour guards and controlled access. Additional amenities include dedicated parking, landscaped communal spaces, and proximity to shops, schools, and transport, making it an ideal home for couples, small families, or professionals.

Features

Interior		Exterior		Sizes	
Bedrooms	2	Carports / Parkings	1	Floor Size	60m <sup>2</sup>
Bathrooms	1	Security	Yes		
Kitchens	1	Pool	No		
Recep. Rooms	1	Views	False		
Furnished	No				

