

Charlotte Scheepers
0692172126
charlottes@delucia.co.za

Contact Kempton Park

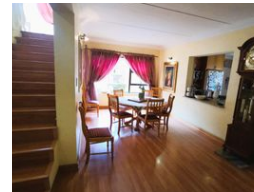
011 975 5911

Entrance 9,
Gleneagles Office Park,
Koorboom Ave,
Glen Erasmia x22,
Kempton Park,
1619

FEATURED



Web Ref RL3553



R6,250,000

 4  3  3

Monthly Bond Repayment R64,511.77

Calculated over 20 years at 11% with no deposit.

Transfer Costs R551,266.00 **Bond Costs** R70,535.00

These calculations are only a guide. Please ask your conveyancer for exact calculations.

Monthly Levy R350 **Monthly Rates** R2,352

House for sale in Terenure

Step into luxury with this stunning double-storey Tuscan-style 4-bedroom family home, boasting a grand double-volume entrance that leads to open-plan living spaces designed for both elegance and comfort. The gourmet kitchen, complete with premium appliances, sets the stage for culinary creativity, while spacious dining and lounge areas offer seamless flow for entertaining. Enjoy the sparkling, covered pool for year-round relaxation. With 3 garages, this property also includes 4 well-appointed granny flats, ideal for extended family, guests, or rental income. Located in a desirable neighbourhood, this home is an incredible investment in style, luxury, and space.

Features

Pets Allowed	Yes				
Interior		Exterior		Sizes	
Bedrooms	4	Garages	3	Land Size	1,702m ²
Bathrooms	3	Carports / Parkings	4		
Kitchens	1	Security	Yes		
Recep. Rooms	3	Dom. Accom.	1		
Studies	1	Pool	Yes		
Furnished	No	Views	False		

