



Tinus Coetzer
0845718936
tinusc@delucia.co.za

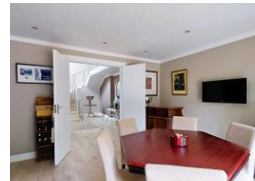
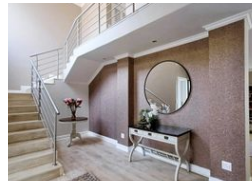
Contact Kempton Park

011 975 5911

Entrance 9,
Gleneagles Office Park,
Koorsboom Ave,
Glen Erasmia x22,
Kempton Park,
1619



Web Ref RL3604



R9,950,000

 5  4  4

Monthly Bond Repayment R102,702.75

Calculated over 20 years at 11% with no deposit.

Transfer Costs R975,176.00 **Bond Costs** R84,785.00

These calculations are only a guide. Please ask your conveyancer for exact calculations.

Monthly Levy R4,640 **Monthly Rates** R4,866

House for sale in Serengeti Golf and Lifestyle Estate

EXQUISITE CONTEMPORARY LIVING – NEARLY OFF-GRID LUXURY HOME

Step into the epitome of modern elegance with this stunning 5-bedroom, 4-bathroom home, thoughtfully designed for comfort, entertainment, and sustainable living.

 Exceptional Features & Layout:

Grand open-plan living & dining areas seamlessly extending to a landscaped garden through full-height glass sliding doors. A designer entertainment area with seating for exclusive gatherings, flowing onto a sparkling pool, patio, boma, built-in braai and Pizza oven – perfect for hosting in style.

A large family lounge, ideal for cozy TV nights.

Extraordinary study leading to a private 5th bedroom – ideal as a separate guest suite or granny flat.

Gourmet kitchen with premium finishes, perfect for culinary enthusiasts.

Guest restroom on the ground floor for added convenience.

...

Features

Pets Allowed Yes

Interior

Bedrooms 5
Bathrooms 4
Kitchens 1
Recep. Rooms 6
Studies 1
Furnished No

Exterior

Garages 4
Carports / Parkings 3
Security Yes
Dom. Accom. 1
Pool Yes
Views True

Sizes

Floor Size 700m²
Land Size 1,187m²

