

Charlotte Scheepers
0692172126
charlottes@delucia.co.za

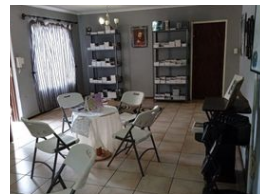
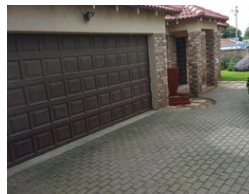
[Contact Kempton Park](#)

011 975 5911

Entrance 9,
Gleneagles Office Park,
Koorsboom Ave,
Glen Erasmia x22,
Kempton Park,
1619



Web Ref RL3590



R1,350,000

 3  2  22

Monthly Bond Repayment R13,934.54

Calculated over 20 years at 11% with no deposit.

Transfer Costs R39,117.00 **Bond Costs** R27,105.00

These calculations are only a guide. Please ask your conveyancer for exact calculations.

Monthly Rates R1,034

House for sale in Kempton Park

Discover this stunning 3-bedroom home, perfectly located within a sought-after neighbourhood. Boasting a generous stand, this property offers ample outdoor space, ideal for family living and entertaining. Enjoy a beautifully maintained sparkling pool, perfect for summer relaxation. The home features spacious bedrooms, a modern kitchen, and open-plan living areas that seamlessly flow to the lush garden. Conveniently situated close to Sir Pierre Van Ryneveld High School, shopping centers, and major transport routes. A must-see for families and investors alike!

Features

Interior

Bedrooms	3
Bathrooms	2
Kitchens	1
Recep. Rooms	1
Furnished	No

Exterior

Garages	22
Security	No
Pool	Yes
Views	False

Sizes

Land Size	504m²
-----------	-------