

Joey Alston
0832636832
joeya@delucia.co.za

Contact Kempton Park

011 975 5911

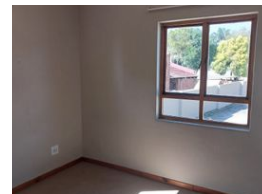
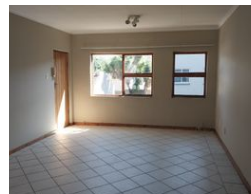
Entrance 9,
Gleneagles Office Park,
Koorsboom Ave,
Glen Erasmia x22,
Kempton Park,
1619

2 Bedroom Townhouse For Sale in Glen Marais


NEW



Web Ref RL3663



R595,000

 2  1

Monthly Bond Repayment R6,141.52

Calculated over 20 years at 11% with no deposit.

Transfer Costs R21,217.00 **Bond Costs** R15,795.00

These calculations are only a guide. Please ask your conveyancer for exact calculations.

Monthly Levy R1,366 **Monthly Rates** R787

Townhouse for sale in Glen Marais

This spacious and neat 2-bedroom unit is nestled in a secure, well-kept complex, offering comfortable and convenient living. The open-plan lounge and dining area flow seamlessly into a well-appointed kitchen with ample cupboard space. Both bedrooms are generously sized with built-in cupboards, and the full bathroom is clean and modern. The unit is light-filled, well-maintained, and move-in ready. Enjoy peace of mind and beautifully maintained communal gardens. Ideal for first-time buyers, small families, or investors, this home combines practicality with charm in a quiet, sought-after neighborhood close to shops, schools, and transport routes.

Features

Interior

Bedrooms	2
Bathrooms	1
Kitchens	1
Recep. Rooms	1
Furnished	No

Exterior

Carports / Parkings	1
Security	No
Pool	No
Views	False

Sizes

Floor Size	62m ²
------------	------------------

