

**Joey Alston**  
0832636832  
joeya@delucia.co.za

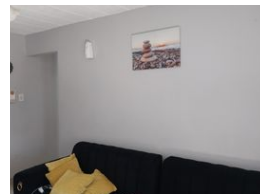
Contact Kempton Park

011 975 5911

Entrance 9,  
Gleneagles Office Park,  
Koorsoom Ave,  
Glen Erasmia x22,  
Kempton Park,  
1619



Web Ref RL3478



R690,000

2 Bedrooms 1 Bathrooms

**Monthly Bond Repayment** R7,122.10  
Calculated over 20 years at 11% with no deposit.

**Transfer Costs** R23,730.00    **Bond Costs** R17,680.00

These calculations are only a guide. Please ask your conveyancer for exact calculations.

**Monthly Levy** R1,198    **Monthly Rates** R560

### Townhouse for sale in Glen Marais

This charming 2-bedroom ground floor unit is located in a secure complex, offering peace of mind with 24-hour security. The unit features spacious bedrooms, an open-plan living area, and a modern kitchen. Large windows provide ample natural light, and the private patio is perfect for outdoor relaxation. Residents can enjoy the on-site amenities, including a sparkling swimming pool and beautifully landscaped gardens. Conveniently situated near shops, schools, and public transport, this unit combines comfort, convenience, and safety, making it an ideal home for small families or professionals.

### Features

Interior		Exterior		Sizes	
Bedrooms	2	Carports / Parkings	1	Floor Size	53m <sup>2</sup>
Bathrooms	1	Security	Yes		
Kitchens	1	Pool	Yes		
Recep. Rooms	1	Views	False		
Furnished	No				

