



Joey Alston
0832636832
joeya@delucia.co.za

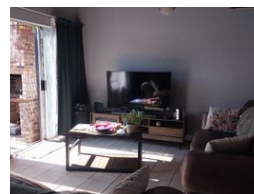
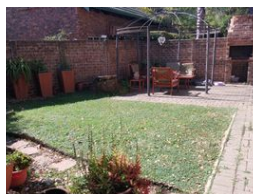
Contact Kempton Park

011 975 5911

Entrance 9,
Gleneagles Office Park,
Koorsoom Ave,
Glen Erasmia x22,
Kempton Park,
1619



Web Ref RL3407



R1,450,000

Monthly Bond Repayment R14,966.73
Calculated over 20 years at 11% with no deposit.

Transfer Costs R44,285.00 **Bond Costs** R28,990.00

These calculations are only a guide. Please ask your conveyancer for exact calculations.

Monthly Levy R1,500

 3  2  1

Townhouse for sale in Glen Marais

Experience contemporary living at its finest in this spacious loft-style townhouse nestled within a secure complex in a sought-after suburb. Boasting modern design elements and ample space, this residence offers the perfect blend of style and comfort. Step into the airy open-plan layout, where natural light floods the space, accentuating sleek finishes and creating a welcoming ambiance. Outside, a private garden beckons, providing a serene retreat for relaxation and outdoor enjoyment. With the assurance of security and the allure of modernity, this home invites you to embrace a lifestyle of sophistication and tranquility in an enviable location.

Features

Pets Allowed	Yes			
Interior		Exterior		Sizes
Bedrooms	3	Garages	1	Floor Size
Bathrooms	2	Carports / Parkings	1	114m ²
Kitchens	1	Security	Yes	
Recep. Rooms	1	Pool	No	
Furnished	No	Views	False	

