

Joey Alston
0832636832
joeya@delucia.co.za

Contact Kempton Park

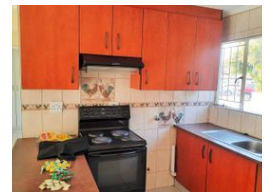
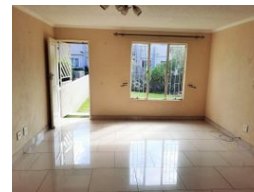
011 975 5911

Entrance 9,
Gleneagles Office Park,
Koorboom Ave,
Glen Erasmia x22,
Kempton Park,
1619



SOLE MANDATE

Web Ref RL2777



R750,000

2 Bedrooms 1 Bathroom

Monthly Bond Repayment R7,741.41
Calculated over 20 years at 11% with no deposit.

Transfer Costs R25,898.00 **Bond Costs** R19,565.00

These calculations are only a guide. Please ask your conveyancer for exact calculations.

Monthly Levy R1,645 **Monthly Rates** R400

Townhouse for sale in Glen Marais

YOU CAN'T AFFORD NOT TO PHONE. This modern and secure 2 bedroom ground floor unit is situated in a well-managed complex with excellent security and comfortable amenities. Perfect for the first-time buyer. Make the call today to VIEW EXCLUSIVELY

Features

Interior

| | |
|--------------|----|
| Bedrooms | 2 |
| Bathrooms | 1 |
| Kitchens | 1 |
| Recep. Rooms | 1 |
| Furnished | No |

Exterior

| | |
|---------------------|-----|
| Carports / Parkings | 1 |
| Security | Yes |
| Pool | Yes |

Sizes

| | |
|------------|------------------|
| Floor Size | 61m ² |
|------------|------------------|

