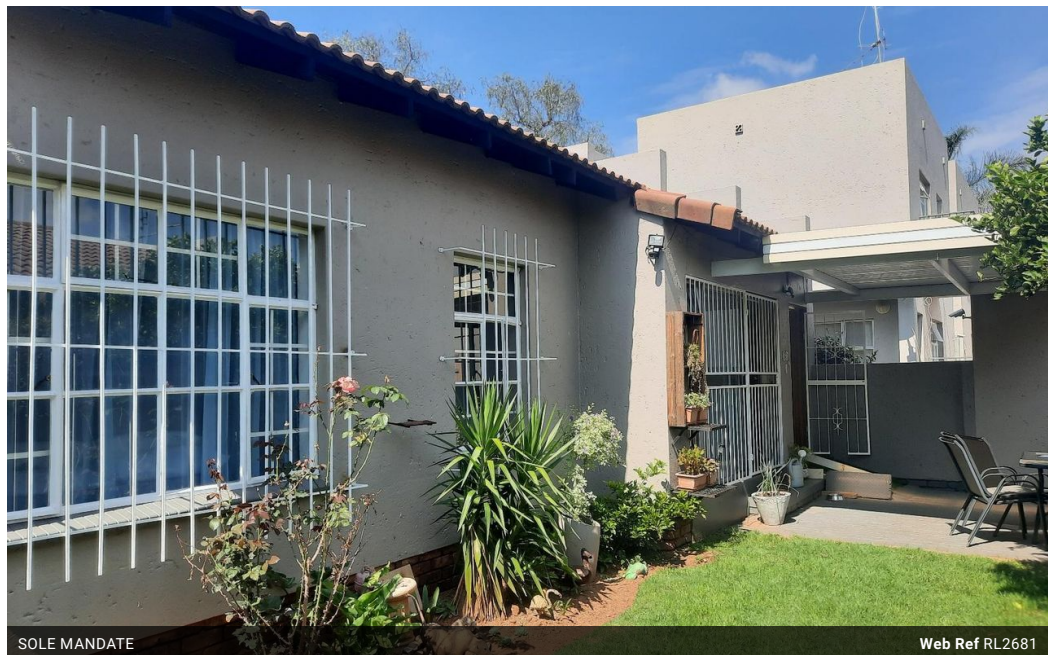


Joey Alston  
0832636832  
joeya@delucia.co.za

Contact Kempton Park

011 975 5911

Entrance 9,  
Gleneagles Office Park,  
Koorsboom Ave,  
Glen Erasmia x22,  
Kempton Park,  
1619



SOLE MANDATE

Web Ref RL2681



R1,400,000

 3  2  1

**Monthly Bond Repayment** R14,450.64  
Calculated over 20 years at 11% with no deposit.

**Transfer Costs** R40,617.00 **Bond Costs** R27,105.00

These calculations are only a guide. Please ask your conveyancer for exact calculations.

**Monthly Levy** R725 **Monthly Rates** R768

### Townhouse for sale in Glen Marais

MODERN SECTIONAL TITLE UNIT WITH MASSIVE PRIVATE GARDEN. Perfect for the buyer seeking a townhouse lifestyle with the privacy of a large garden. Well-located close to all amenities and offering great living comfort. Make the call today to VIEW EXCLUSIVELY

### Features

**Pets Allowed** Yes

**Interior**  
Bedrooms 3  
Bathrooms 2  
Kitchens 1  
Recep. Rooms 1  
Furnished No

**Exterior**  
Garages 1  
Carports / Parkings 1  
Security Yes  
Pool No

**Sizes**  
Floor Size 95m<sup>2</sup>

