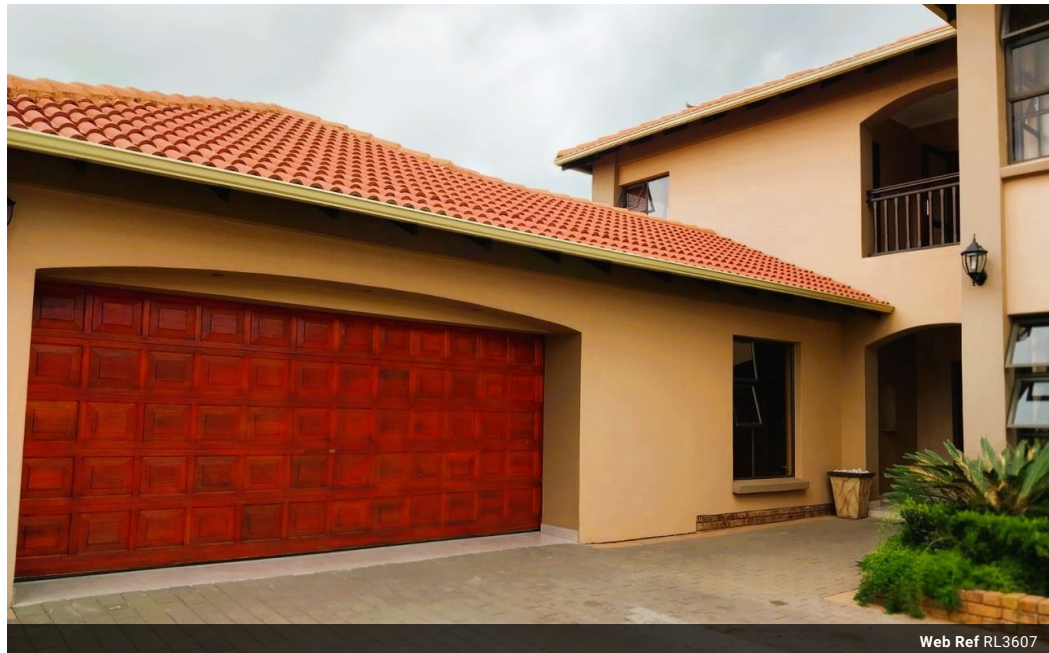


Charlotte Scheepers
0692172126
charlottes@delucia.co.za

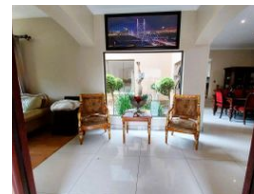
Contact Kempton Park

011 975 5911

Entrance 9,
Gleneagles Office Park,
Koorsboom Ave,
Glen Erasmia x22,
Kempton Park,
1619



Web Ref RL3607



R4,620,000

4 Bedrooms, 3 Bathrooms, 2 Carports

Monthly Bond Repayment R47,687.10
Calculated over 20 years at 11% with no deposit.

Transfer Costs R358,377.00 **Bond Costs** R59,150.00
These calculations are only a guide. Please ask your conveyancer for exact calculations.

Monthly Levy R2,300 **Monthly Rates** R1,570

House for sale in Glen Erasmia Boulevard

This stunning 4-bedroom, 3-bathroom family home offers the perfect blend of elegance and modern sophistication. Nestled in a secure estate with 24-hour guards, it provides peace of mind and an exclusive lifestyle. The open-plan living areas are designed for seamless flow, featuring high-end finishes and abundant natural light. A gourmet kitchen leads to spacious dining and lounge areas, ideal for entertaining. The luxurious bathrooms boast contemporary fittings, enhancing the home's stylish appeal. A double garage offers ample parking and storage. With top-tier security and refined finishes, this home is the epitome of comfort and style for discerning buyers.

Features

Pets Allowed	Yes		
Interior		Exterior	Sizes
Bedrooms	4	Garages	2
Bathrooms	3	Carports / Parkings	2
Kitchens	1	Security	Yes
Recep. Rooms	3	Pool	No
Studies	1	Views	False
Furnished	No		
			Floor Size 461m ²
			Land Size 675m ²

