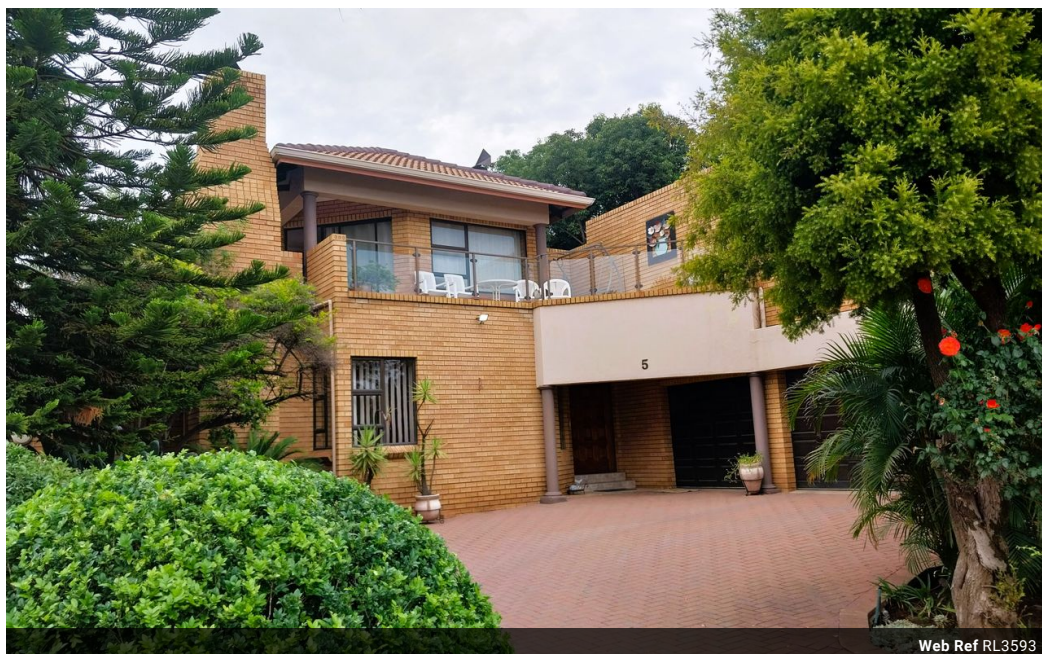


Joey Alston  
0832636832  
joeya@delucia.co.za

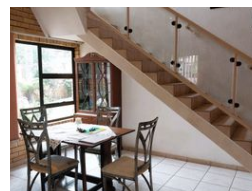
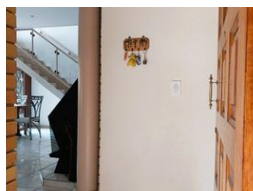
Contact Kempton Park

011 975 5911

Entrance 9,  
Gleneagles Office Park,  
Koorsboom Ave,  
Glen Erasmia x22,  
Kempton Park,  
1619



Web Ref RL3593



R2,670,000

3 2 2

Monthly Bond Repayment R27,559.43

Calculated over 20 years at 11% with no deposit.

Transfer Costs R131,487.00 Bond Costs R40,300.00

These calculations are only a guide. Please ask your conveyancer for exact calculations.

Monthly Levy R2,200 Monthly Rates R2,218

## House for sale in Glen Erasmia Boulevard

This architectural masterpiece in the secure estate of Glen Erasmia blends modern design with luxury and comfort. Featuring expansive open-plan living areas, high ceilings, and floor-to-ceiling windows, the home is bathed in natural light, creating a seamless indoor-outdoor flow. The gourmet kitchen, fitted with top-tier appliances, opens to stylish entertainment spaces and a lush landscaped garden. Spacious bedrooms, elegant finishes, and smart-home technology enhance convenience and sophistication. Located in a prestigious estate with 24/7 security, this residence offers unparalleled peace of mind and exclusivity. A true haven for contemporary living, combining style, space, and tranquility.

## Features

Pets Allowed		Yes			
Interior		Exterior		Sizes	
Bedrooms	3	Garages	2	Floor Size	230m²
Bathrooms	2	Carports / Parkings	2	Land Size	625m²
Kitchens	1	Security	Yes		
Recep. Rooms	3	Pool	Yes		
Studies	1	Views	False		
Furnished	No				

