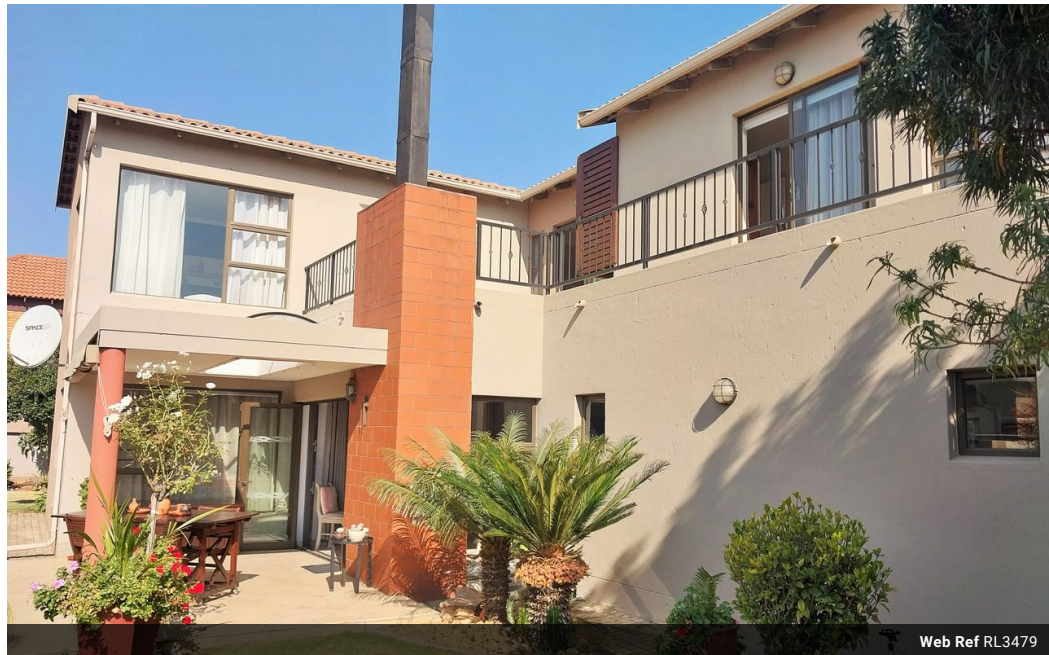


Joey Alston
0832636832
joeya@delucia.co.za

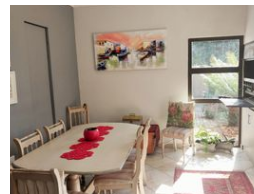
Contact Kempton Park

011 975 5911

Entrance 9,
Gleneagles Office Park,
Koorsboom Ave,
Glen Erasmia x22,
Kempton Park,
1619



Web Ref RL3479



R3,200,000

3 Bedrooms, 2 Bathrooms, 2 Carports

Monthly Bond Repayment R33,030.03
Calculated over 20 years at 11% with no deposit.

Transfer Costs R184,379.00 Bond Costs R44,070.00
These calculations are only a guide. Please ask your conveyancer for exact calculations.

Monthly Levy R2,000 Monthly Rates R3,200

House for sale in Gleneagle Estate

This executive and elegant double-storey home in Gleneagle Estate offers a luxurious lifestyle with its three spacious bedrooms and sophisticated design. The open-plan living area seamlessly connects to a covered patio, perfect for entertaining or relaxing. High-end finishes and modern amenities add a touch of class, while large windows ensure abundant natural light. The secure lifestyle estate provides peace of mind with 24/7 security, beautifully landscaped gardens, and exclusive access to communal facilities. This home embodies comfort, style, and security, ideal for those seeking an upscale living experience.

Features

Pets Allowed	Yes				
Interior		Exterior		Sizes	
Bedrooms	3	Garages	2	Floor Size	296m ²
Bathrooms	2	Carports / Parkings	4	Land Size	604m ²
Kitchens	1	Security	Yes		
Recep. Rooms	2	Pool	No		
Furnished	No	Views	False		

