

Charlotte Scheepers
0692172126
charlottes@delucia.co.za

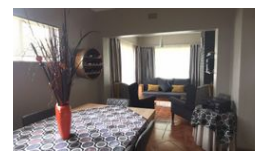
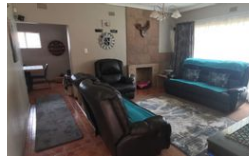
Contact Kempton Park

011 975 5911

Entrance 9,
Gleneagles Office Park,
Koorsboom Ave,
Glen Erasmia x22,
Kempton Park,
1619



Web Ref RL3602



R1,750,000

3 Bedrooms, 2 Bathrooms, 2 Carports

Monthly Bond Repayment R18,063.30
Calculated over 20 years at 11% with no deposit.

Transfer Costs R58,039.00 Bond Costs R30,875.00

These calculations are only a guide. Please ask your conveyancer for exact calculations.

Monthly Rates R1,248

House for sale in Birchleigh

Step into a home where timeless elegance meets contemporary comfort. This exquisite residence seamlessly combines old-world charm with modern upgrades, offering a sophisticated yet warm living experience.

Spacious and beautifully appointed, the home boasts large bedrooms that provide a peaceful retreat, while the open-plan living and dining areas create an inviting space for family gatherings and entertaining. High ceilings, classic architectural details, and tasteful modern finishes enhance the home's character.

The sleek, modern kitchen is a chef's dream, featuring high-end appliances, ample storage, and stylish finishes. Outside, the property sits on a beautiful stand, offering a serene setting with manicured gardens and ample outdoor space.

This home is a rare find—where history meets luxury, creating an extraordinary...

Features

Pets Allowed Yes

Interior

Bedrooms 3
Bathrooms 2
Kitchens 1
Recep. Rooms 3
Furnished No

Exterior

Garages 2
Carports / Parkings 1
Security Yes
Dom. Accom. 1
Pool No
Views False

Sizes

Land Size 992m²

