

Charlotte Scheepers
0692172126
charlottes@delucia.co.za

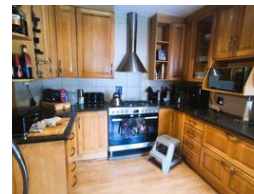
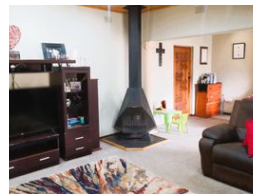
Contact Kempton Park

011 975 5911

Entrance 9,
Gleneagles Office Park,
Koorboom Ave,
Glen Erasmia x22,
Kempton Park,
1619



Web Ref RL3546



R1,980,000

 3  2  2

Monthly Bond Repayment R20,437.33
Calculated over 20 years at 11% with no deposit.

Transfer Costs R74,006.00 **Bond Costs** R32,760.00

These calculations are only a guide. Please ask your conveyancer for exact calculations.

Monthly Levy R590 **Monthly Rates** R1,392

House for sale in Birchleigh

Discover this magnificent 3-bedroom family home, thoughtfully designed for luxury and comfort. The inviting lounge features a cozy fireplace, perfect for winter evenings, and flows into a solid wood kitchen with charm and functionality. Each bathroom offers luxurious finishes, enhancing the overall elegance. Step outside to a sparkling pool and a charming thatched lapa with a built-in braai, ideal for entertaining in style. Nestled in a secure, boomed suburb, this home provides peace of mind, privacy, and a tranquil lifestyle, all within a beautifully maintained setting. PLUS granny flat!

Features

Pets Allowed Yes

Interior
Bedrooms 3
Bathrooms 2
Kitchens 1
Recep. Rooms 3
Furnished No

Exterior
Garages 2
Carports / Parkings 2
Security Yes
Dom. Accom. 1
Pool Yes
Views False

Sizes
Floor Size 317m²
Land Size 1,020m²

