

Charlotte Scheepers
0692172126
charlottes@delucia.co.za

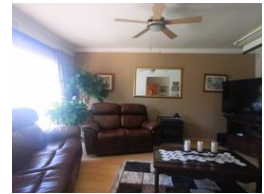
Contact Kempton Park

011 975 5911

Entrance 9,
Gleneagles Office Park,
Koorsboom Ave,
Glen Erasmia x22,
Kempton Park,
1619



Web Ref RL3636



R2,650,000

 3  2  4

Monthly Bond Repayment R27,352.99
Calculated over 20 years at 11% with no deposit.

Transfer Costs R129,887.00 **Bond Costs** R40,300.00
These calculations are only a guide. Please ask your conveyancer for exact calculations.

Monthly Rates R2,174

House for sale in Aston Manor

This spacious 3-bedroom family home, located in a secure boomed-off area, offers modern finishes and a warm, inviting atmosphere. The open-plan living spaces are designed for comfort and flow, seamlessly connecting to a large, well-maintained garden—perfect for children and outdoor relaxation. The stylish kitchen and contemporary bathrooms add a touch of elegance. A separate granny flat provides additional space for extended family, guests, or rental potential. With its prime location, security, and blend of modern design with ample outdoor space, this home is ideal for families seeking both convenience and a peaceful suburban lifestyle.

Features

Pets Allowed		Exterior		Sizes	
	Yes	Garages	4	Floor Size	416m ²
Interior		Carports / Parkings	2	Land Size	1,487m ²
Bedrooms	3	Security	Yes		
Bathrooms	2	Pool	Yes		
Kitchens	1	Views	False		
Recep. Rooms	3				
Studies	1				
Furnished	No				

