

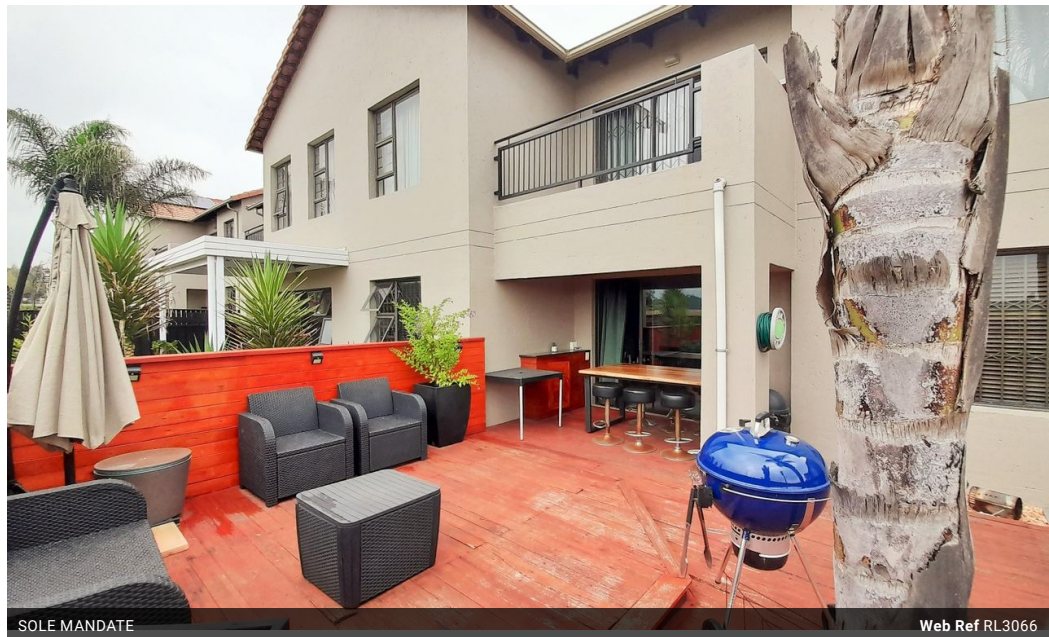


Nicolle De Lucia
0833212782
nicolledl@delucia.co.za

Contact Kempton Park

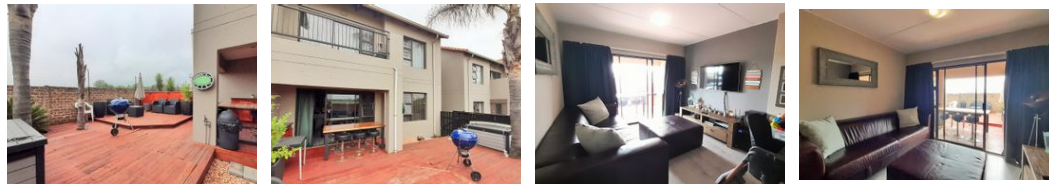
011 975 5911

Entrance 9,
Gleneagles Office Park,
Koorboom Ave,
Glen Erasmia x22,
Kempton Park,
1619



SOLE MANDATE

Web Ref RL3066



R920,000

 2  1

Monthly Bond Repayment R9,496.13
Calculated over 20 years at 11% with no deposit.

Transfer Costs R30,412.00 **Bond Costs** R23,335.00
These calculations are only a guide. Please ask your conveyancer for exact calculations.

Monthly Levy R1,700 **Monthly Rates** R825

Townhouse for sale in Brentwood Park

GROUND FLOOR LIVING AT ITS BEST. This immaculate, spacious and modern unit offers comfortable living in a secure complex with 24 Hour guards and access control. Close to all amenities. Excellent value for money. Make the call today to VIEW EXCLUSIVELY

Features

Pets Allowed	Yes				
Interior		Exterior		Sizes	
Bedrooms	2	Carports / Parkings	1	Floor Size	72m ²
Bathrooms	1	Security	Yes		
Kitchens	1	Pool	No		
Recep. Rooms	1	Views	False		
Furnished	No				

