

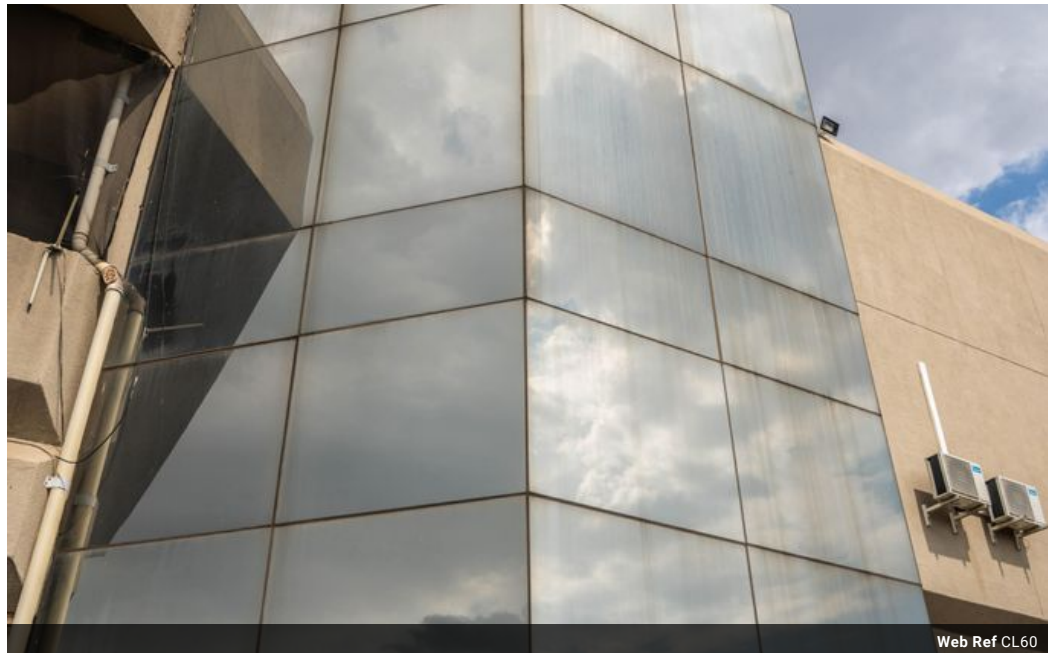


Kevin Gie
0824916309
keving@delucia.co.za

Contact Kempton Park

011 975 5911

Entrance 9,
Gleneagles Office Park,
Koorsboom Ave,
Glen Erasmia x22,
Kempton Park,
1619



Web Ref CL60



POA

 0  0

Retail and Office Space to rent in Edenvale Business Centre

The building is situated on Van Riebeeck Avenue, Edenvale which is the main arterial route through the Central Edenvale Business District.

Access to public transport:

Several taxi and bus routes flow right in front of the building and taxi's and buses traveling in almost all directions can be accessed from ER104 Taxi Rank (550m away);

Metro Bus routes run in close proximity to the building with easy access from Johannesburg CBD;

The Rhodesfield Gautrain Station is 11 km from the building;

Elandsfontein Metrorail Train Station is 7 km from the property.

Vehicular access:

The building is easily accessed via the N12/R24 traveling East/West;

The building is also accessible via the N3 highway traveling North/South.

Features

Zoning Mixed Use

Interior		Exterior		Sizes	
Air Conditioning	Yes	Security	Yes	Floor Size	2,500m ²

