



**Kevin Gie**  
0824916309  
keving@delucia.co.za

Contact Kempton Park

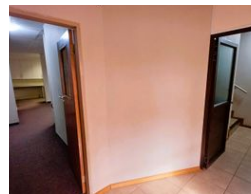
011 975 5911

Entrance 9,  
Gleneagles Office Park,  
Koorboom Ave,  
Glen Erasmia x22,  
Kempton Park,  
1619



SOLE MANDATE

Web Ref CL98



R101 per m<sup>2</sup>

Gross Monthly Rental R22,000 Excl. VAT

 8  0

Offices to rent in a secure office park in Croydon - Isando Area - Available Immediately

The space is self-contained with private entrance and parking (8 spaces). Carpeted and tiled throughout with blinds. Divided into 7/8 offices and an open plan area. All offices and the open plan area are air conditioned.

- Ladies and Gents bathrooms and kitchen facility.
  - Power is provided by the landlord on a metered basis – no interruptions.
  - Water back-up.
  - Applications from tenants compatible with the landlords enterprise (Christian Mission organisation) are invited.
- 24 Hour Access Control and situated in a secure business park with own entrance.

Features

<b>Building Name</b>	TWR Building
<b>Zoning</b>	Commercial
<b>Exterior</b>	<b>Sizes</b>
Covered Parking Bays 8	Floor Size 187m <sup>2</sup>

